

**11.5 Evaluation**

# Results

92.5%  
Score37  
Out of 40 points23:24  
Time for this attempt

11 / 1 point

The organ that produces bile is \_\_\_\_\_.

Pancreas  
gallbladder

✓ Liver

Thymus

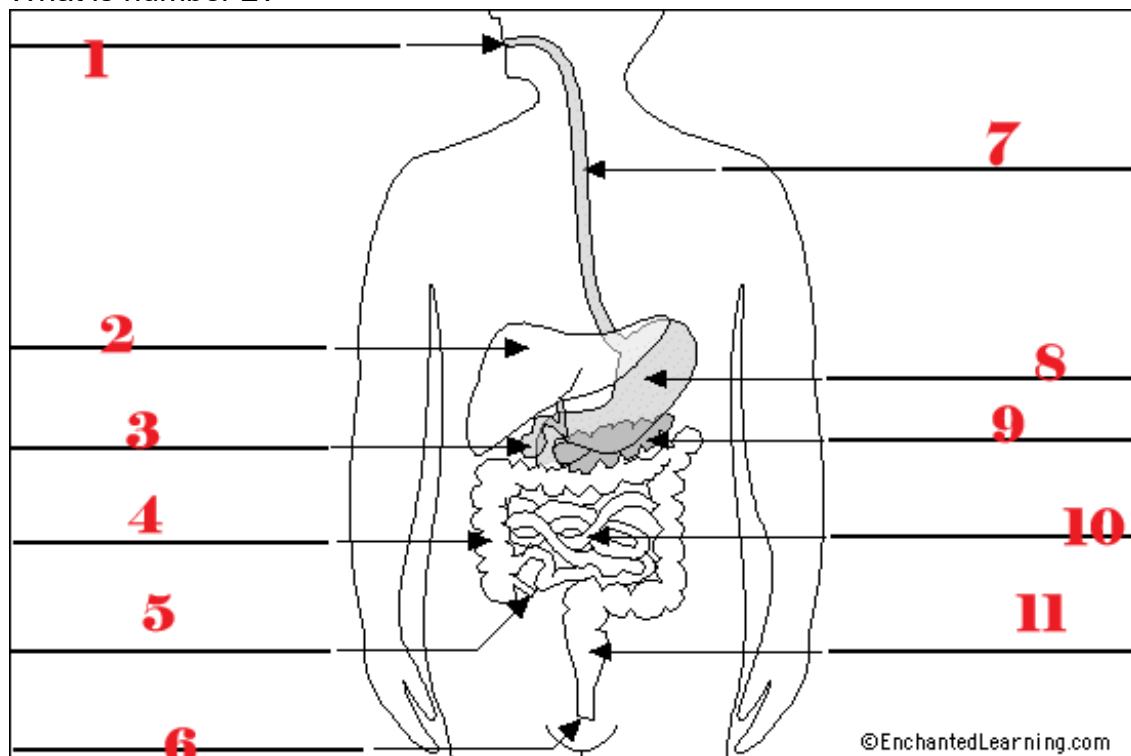
Regrade

1

◇ / 1 point

21 / 1 point

What is number 2?



✓ liver

Regrade

1

◇ / 1 point

31 / 1 point

Which of the following describes the pharynx's stage of deglutition?

Mouth to oropharynx

✓ Oropharynx to esophagus

Esophagus to stomach

None of the above

Regrade

1

◇ / 1 point

41 / 1 point

Cholelithiasis is \_\_\_\_\_.

Inflammation of the colon

Kidney stones

Inflammation of the gallbladder

☒ Gallstones

Regrade

1

◇ / 1 point

51 / 1 point

Jaundice is \_\_\_\_\_.

A disorder of the gallbladder, from high fatty diets

When the appendix becomes inflamed

Disease of the liver

☒ Disorder of the liver that causes yellow skin tone

Regrade

1

◇ / 1 point

61 / 1 point

Zantac reduces the amount of acid in the stomach.

☒ True

False



Regrade

1

◇ / 1 point

71 / 1 point

After food has been chewed, it is formed into a small, rounded mass called a \_\_\_\_.

Moat

Chyme

☒ Bolus

Protease



Regrade

1

◇ / 1 point

81 / 1 point

The enzyme located in the stomach is \_\_\_\_\_.

Protease

Amylase

☒ Pepsin

Peptidase



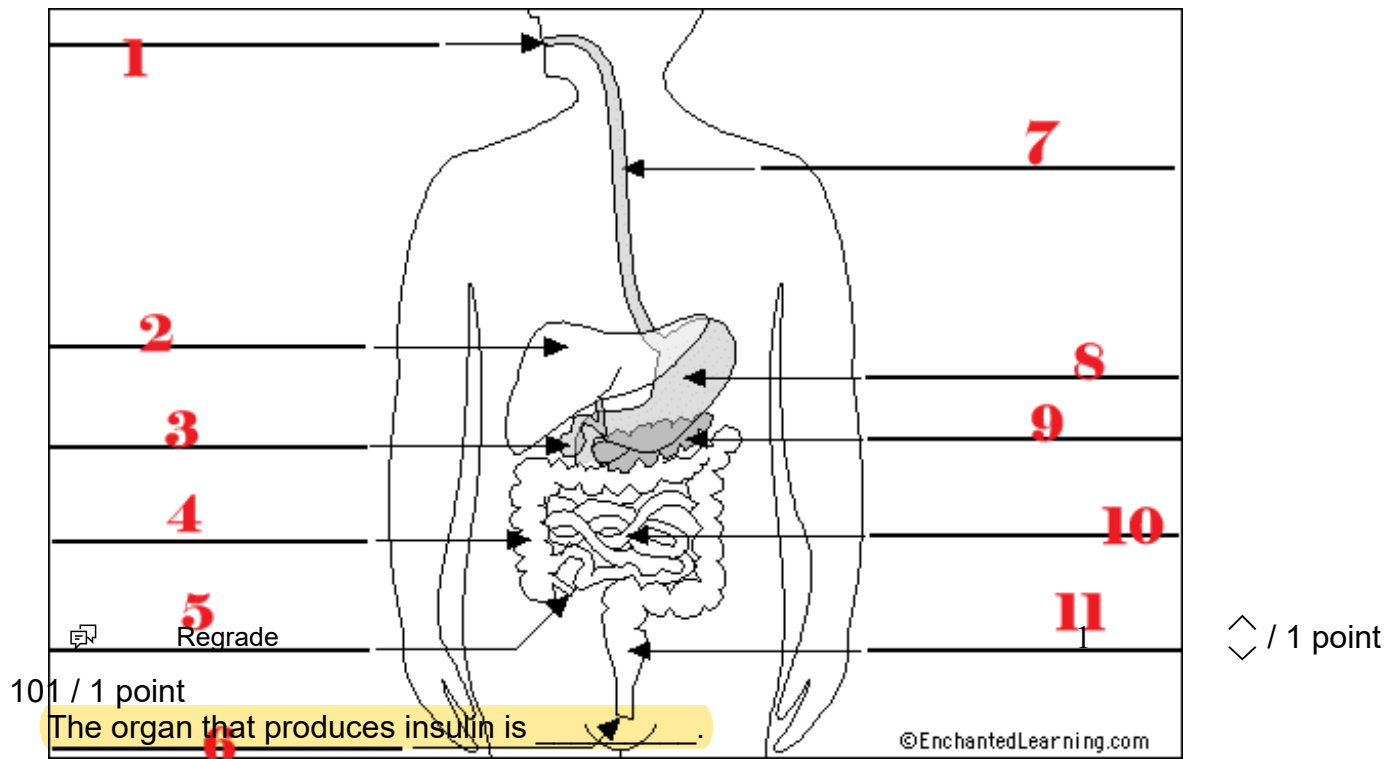
Regrade

1

◇ / 1 point

91 / 1 point

What is number 4?



✓ ☒ large intestines

gallbladder

Liver

Thymus

Regrade

1

/ 1 point

111 / 1 point

What is mastication?

✓ ☒ chewing

swallowing

chewing and swallowing

moving food along the digestive tract

Regrade

1

/ 1 point

121 / 1 point

Peristalsis is the process of what?

The process of taking food into the digestive tract.

✓ ☒ To squeeze food along the pathway from one organ to the next with some mixing occurring along the way.

Elimination of indigestible substances from the body.

Transport of end products from the GI tract to the blood or lymph.

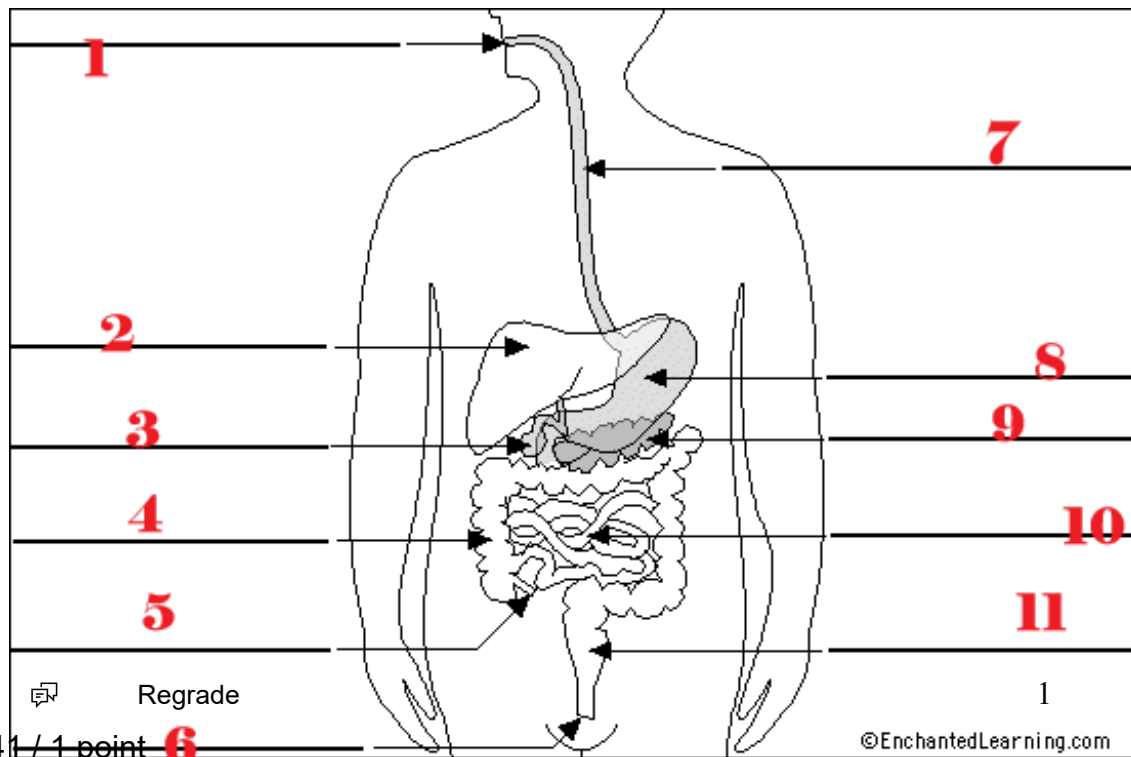
Regrade

1

/ 1 point

131 / 1 point

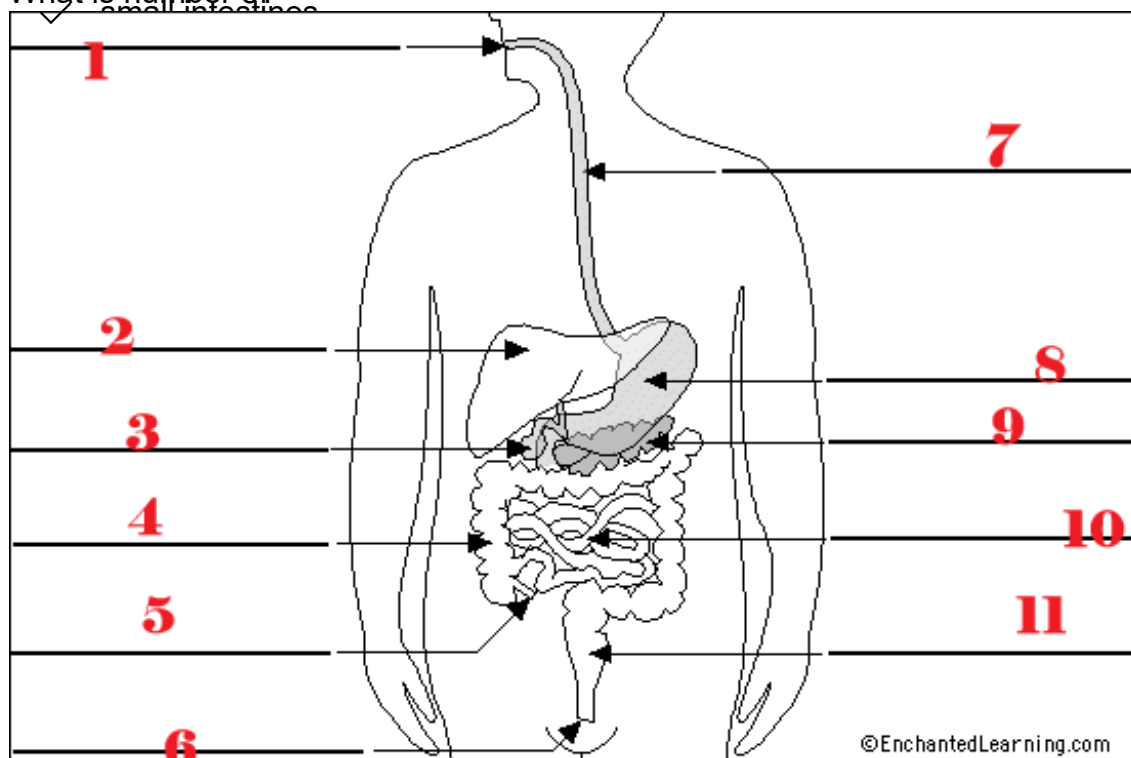
What is number 10?



141 / 1 point

What is number 8?

◇ / 1 point



✓ stomach

Regrade

1

◇ / 1 point

151 / 1 point

What is another name for the gastrointestinal tract?

Accessory tract

✓ Alimentary canal

Accessory canal

Sigmoid tract



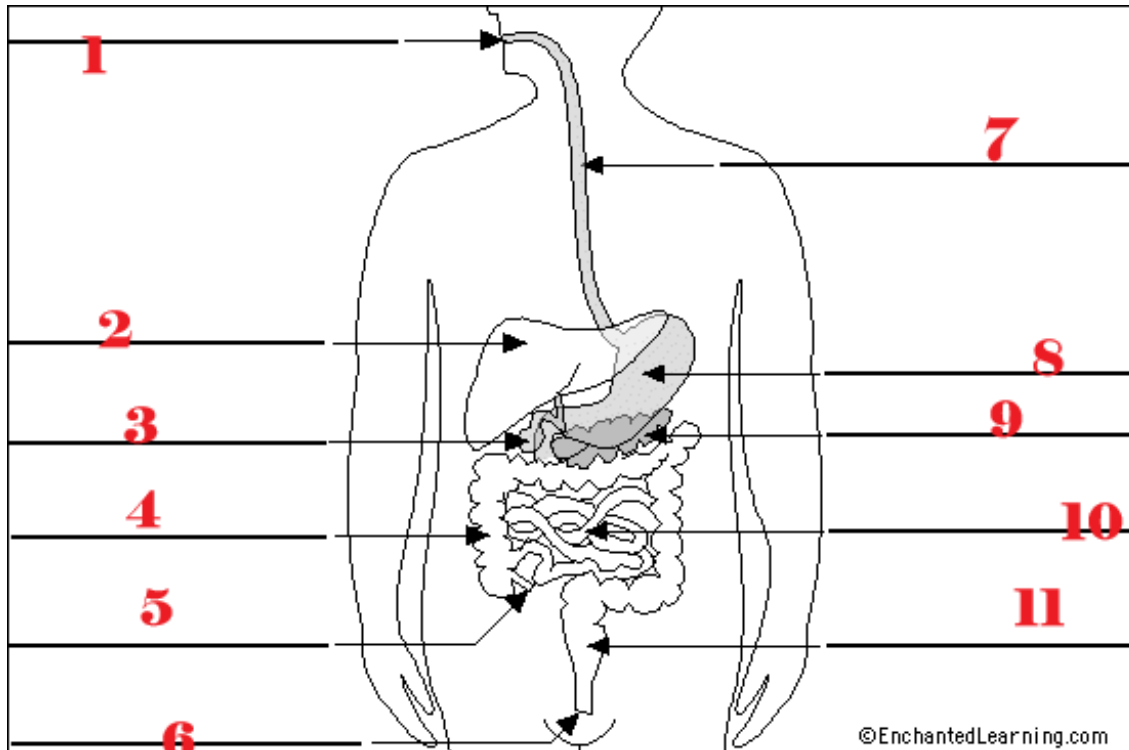
Regrade

1

◇ / 1 point

161 / 1 point

What is number 11?



✓ rectum



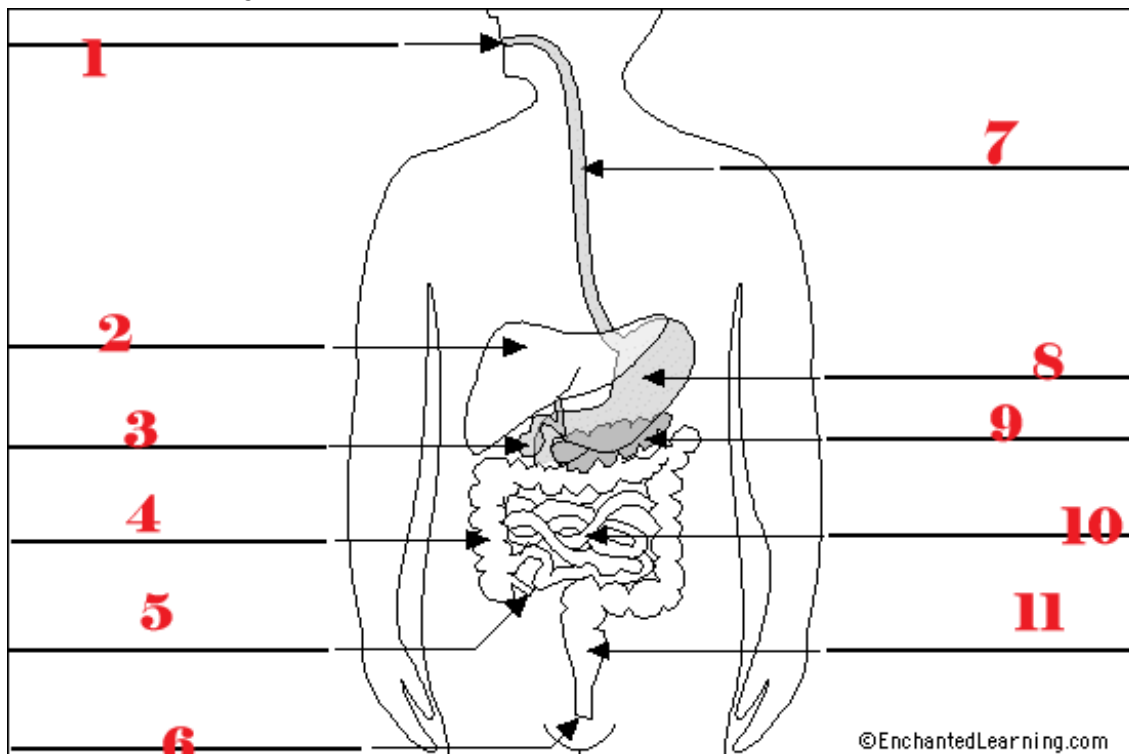
Regrade

1

◇ / 1 point

171 / 1 point

What is number 6?



✓ anus



Regrade

1

◇ / 1 point

181 / 1 point

Food leaves the stomach as a bolus.

True



False



Regrade

1

◇ / 1 point

191 / 1 point

Absorption is the process of what?

The process of taking food into the digestive tract

To squeeze food along the pathway from one organ to the next with some mixing occurring along the way.

Elimination of indigestible substances from the body.



Transport of end products from the GI tract to the blood or lymph.



Regrade

1

◇ / 1 point

201 / 1 point

Which of the following is not part of the GI tract?

Pharynx

Larynx



pancreas

Rectum



Regrade

1

◇ / 1 point

211 / 1 point

Which of the following controls the opening of the stomach into the small intestine?

Pylorus

Cardiac sphincter

Duodenal bulb



Pyloric sphincter



Regrade

1

◇ / 1 point

221 / 1 point

Which of the following substances does not contain any enzymes?

saliva



bile

gastric juice

intestinal juice



Regrade

1

◇ / 1 point

231 / 1 point

Cholelithiasis is surgical removal of the gallbladder.

True



False



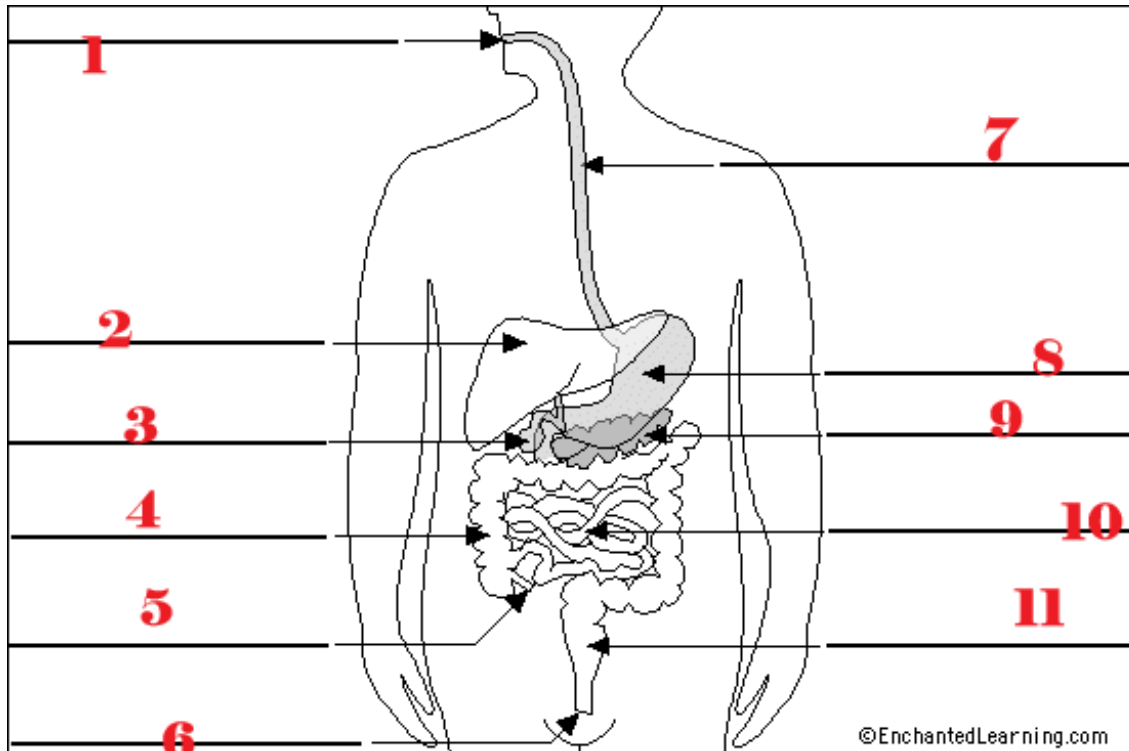
Regrade

1

◇ / 1 point

241 / 1 point

What is number 9?



✓ pancreas



Regrade

1

◇ / 1 point

250 / 1 point

Which of the following statements is not true of the esophagus?

- It extends from the pharynx to the stomach
- It lies posterior to the trachea and posterior to the heart
- ✗ It resides in both the thoracic and abdominal cavities

Correct Answer: It pierces the diaphragm

It pierces the diaphragm



Regrade

0

◇ / 1 point

261 / 1 point

What is number 7?

1

2

3

4

5

6

7

8

9

10

11

Regrade

271 / 1 point

Defecation is the process of what?

The process of taking food into the digestive tract.

To squeeze food along the pathway from one organ to the next with some mixing occurring along the way.

✓ Elimination of indigestible substances from the body

©EnchantedLearning.com

1 / 1 point

Transport food products from the GI tract to the blood or lymph

Regrade

1

/ 1 point

281 / 1 point

The correct order of small intestine divisions starting proximal to the stomach are

Ileum, duodenum, jejunum

Duodenum, ileum, jejunum

✓ Duodenum, jejunum, ileum

Ileum, jejunum, duodenum

Regrade

1

/ 1 point

291 / 1 point

Which of the following is an accessory organ to the digestive system?

Sigmoid colon

Duodenum

✓ Liver

Anus

Regrade

1

/ 1 point

301 / 1 point

Hepatitis B is spread through \_\_\_\_\_.

Direct contact

Drug needles

Sexual contact

Tattoos/piercings

✓ all of the above

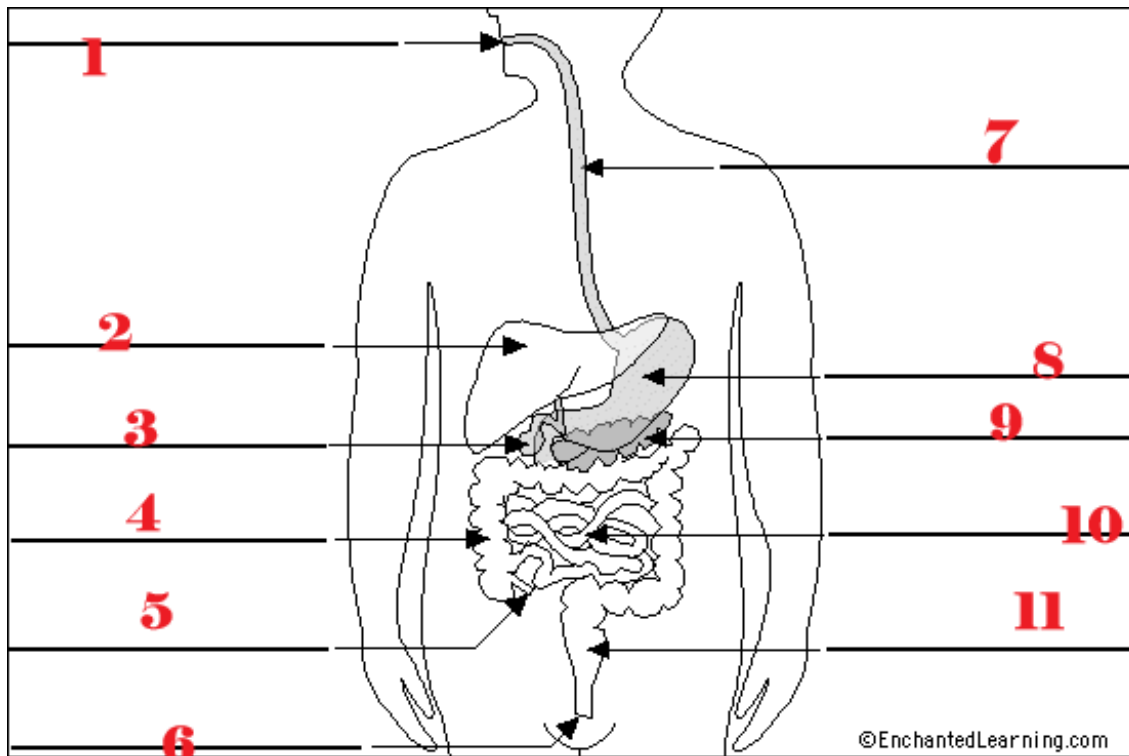
Regrade

1

/ 1 point

311 / 1 point

What is number 5?



✓ appendix



Regrade

1

◇ / 1 point

321 / 1 point

The large intestine's main function is water absorption.

✓ True

False



Regrade

1

◇ / 1 point

331 / 1 point

Food that moves from the stomach to the small intestines is then called

Moat

✓ Chyme

Bolus

Protease



Regrade

1

◇ / 1 point

340 / 1 point

The large intestine is \_\_\_\_\_ feet long.

✗ 5

Correct Answer: 10

10

22

30



Regrade

0

◇ / 1 point

351 / 1 point

Which is not part of the small intestine?

Ileum

Duodenum

✓ Ileum

Jejunum



Regrade

1

◇ / 1 point

361 / 1 point

The gallbladder produces bile.

True

✓ False



Regrade

1

◇ / 1 point

370 / 1 point

Peristalsis begins in the

mouth

pharynx

✗ esophagus

Correct Answer:pharynx

stomach



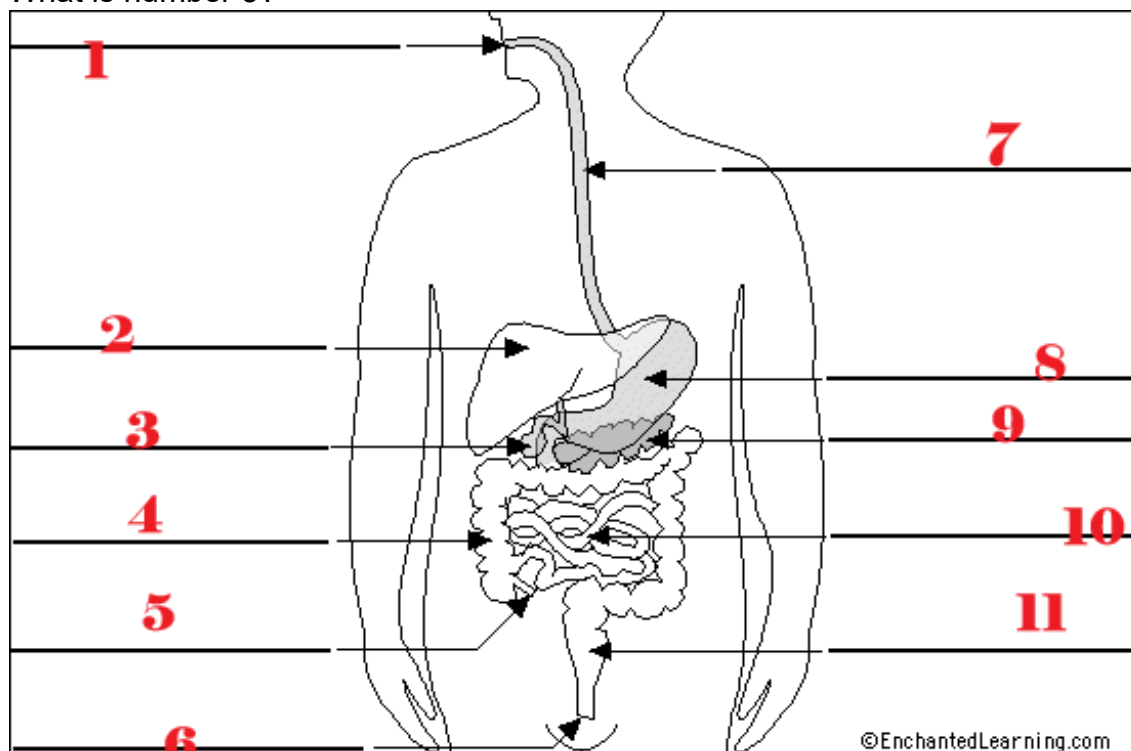
Regrade

0

◇ / 1 point

381 / 1 point

What is number 3?



✓ gallbladder



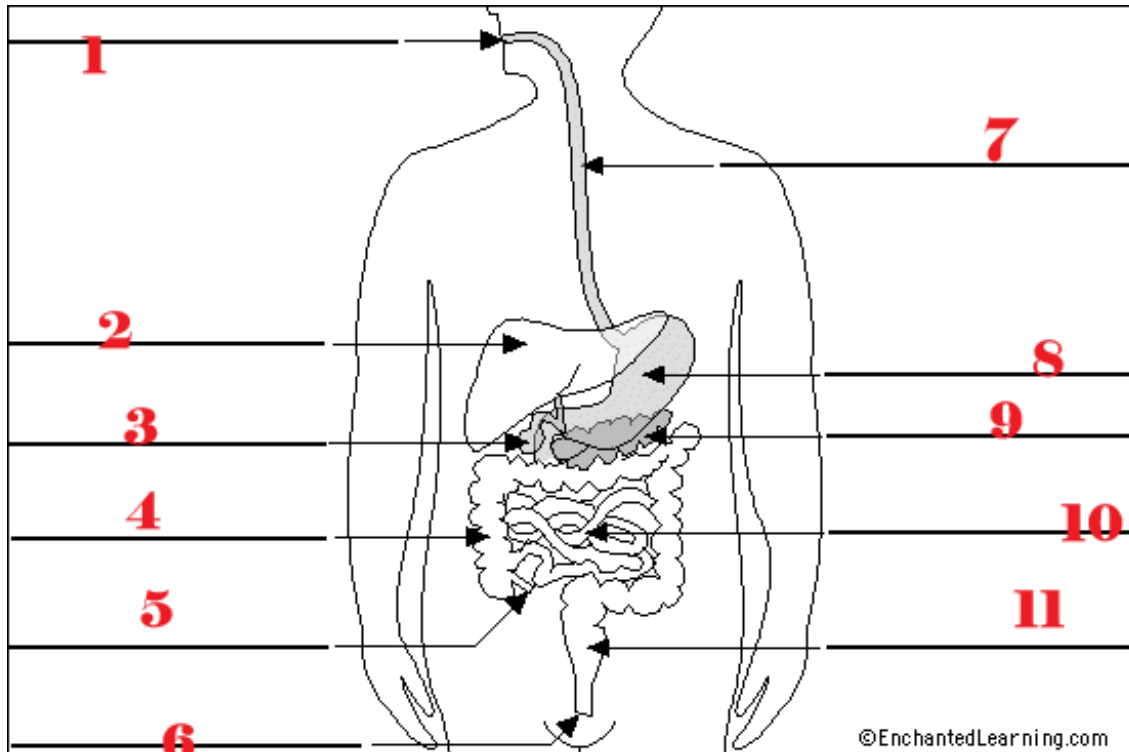
Regrade

1

◇ / 1 point

391 / 1 point

What is number 1?



✓ mouth



Regrade

1

◇ / 1 point

401 / 1 point

The act of swallowing is termed deglutition.

✓ True

False



Regrade

1

◇ / 1 point

Fudge Points

Manually adjust the score by adding positive or negative points to this box



Final Score

37 / 40